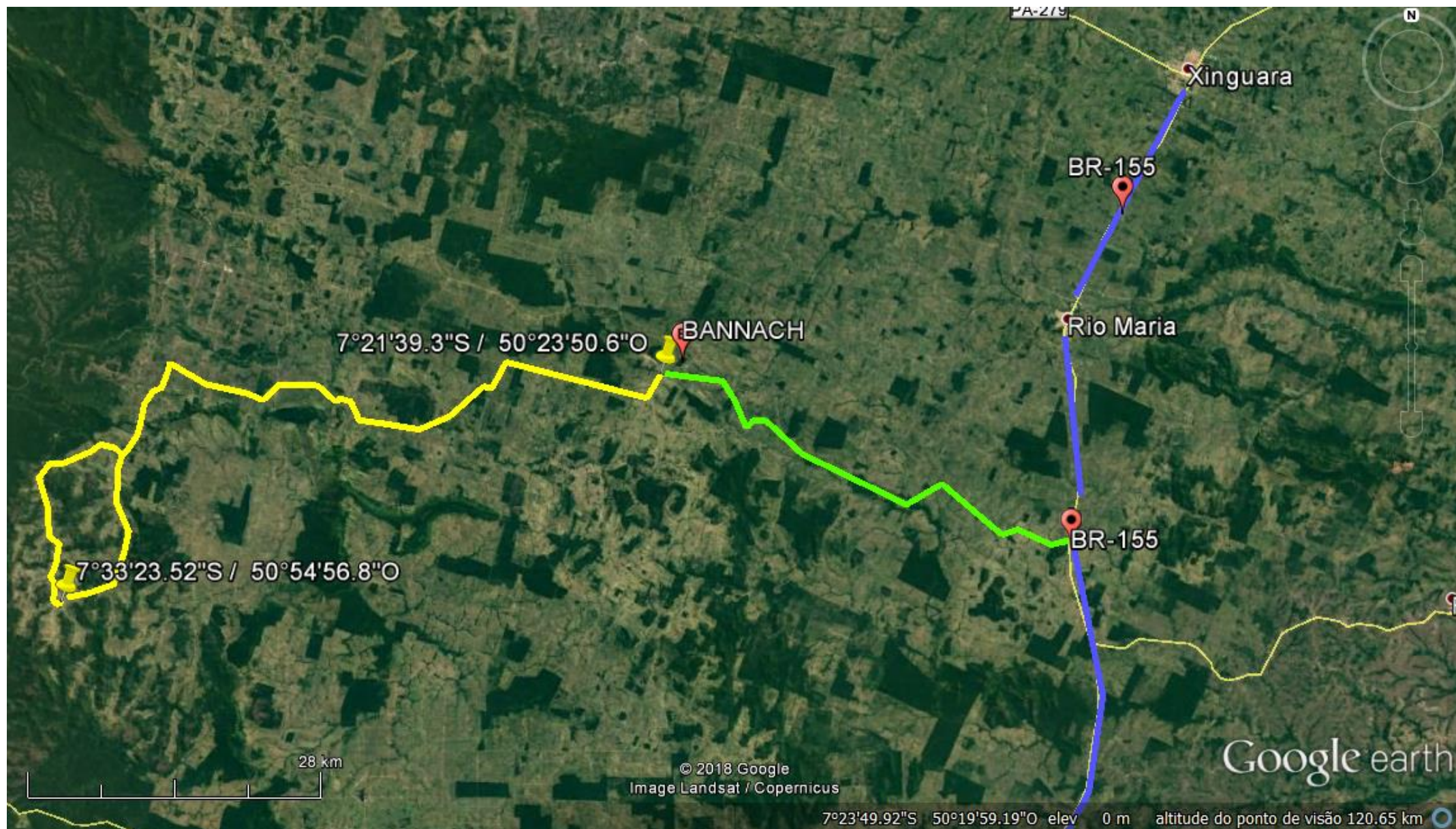
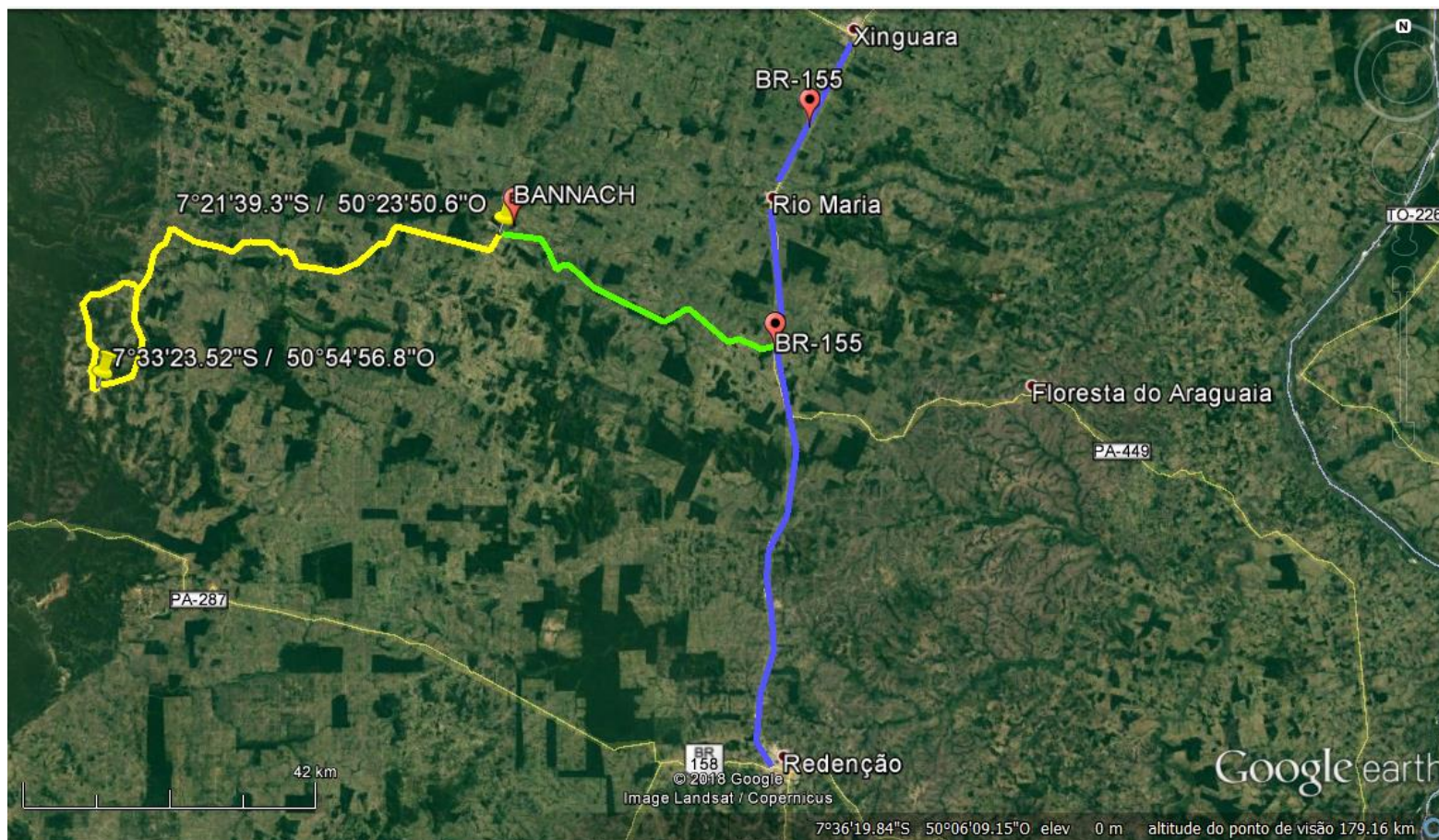





## PREFEITURA MUNICIPAL DE BANNACH



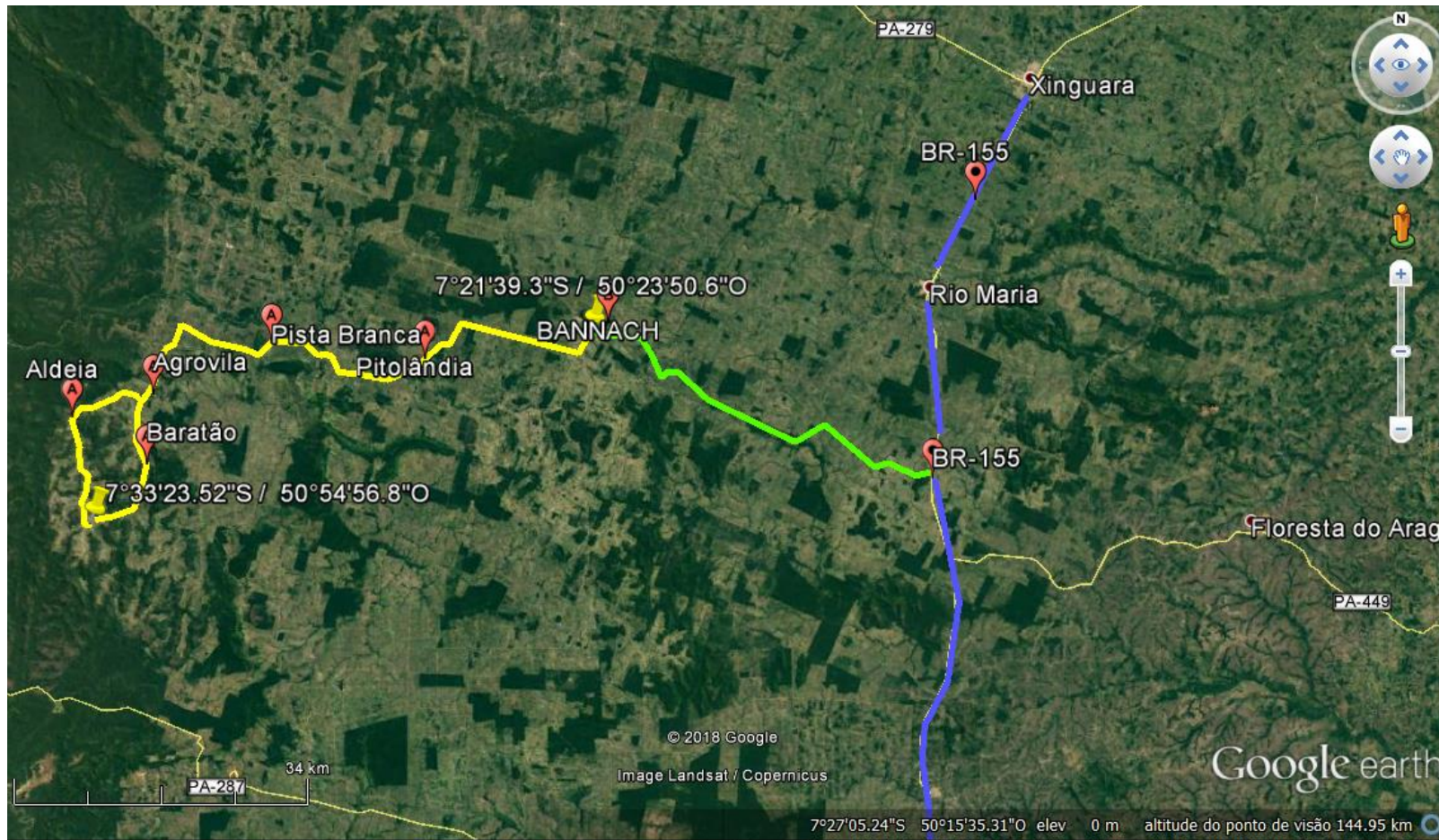
## PREFEITURA MUNICIPAL DE BANNACH



### Legenda:

-  Rodovia BR-155
-  Vicinal de ligação
-  Vicinal onde os bueiros serão construídos

## PREFEITURA MUNICIPAL DE BANNACH



**Comunidades rurais situadas na vicinal onde os BUEIROS SERÃO EXECUTADOS:**  
Pitolândia, Pista Branca, Agrovila, Baratão e Aldeia.



**Lorraine Tainá Silva Donizete**  
Engenheira Civil - CREA 1517127076